

Consulting

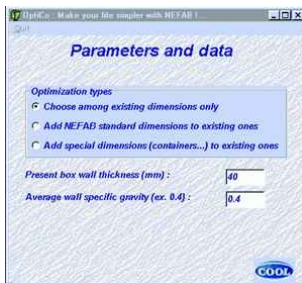
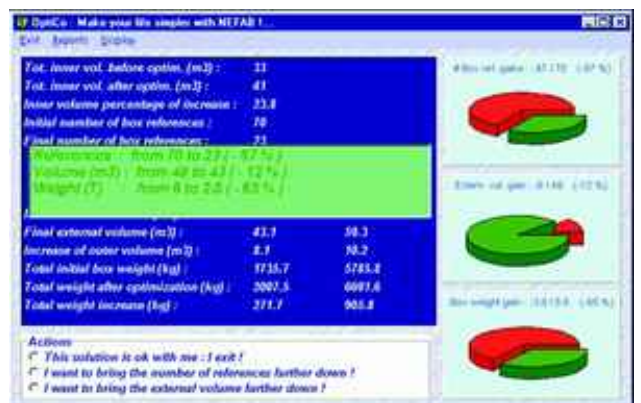
OptiCo Optimisation tool

Main features

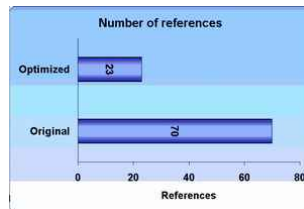
OptiCo is an interactive optimiser which lets you navigate within a set of solutions among which you can choose those best adapted to your requirements

Optico will most certainly show you:

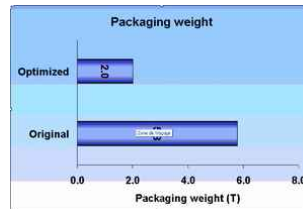
- How the number of different box references that you used could have been reduced considerably while the external volume, and packaging weight would have been brought down very significantly, and the potential for choosing your box dimensions from a more standard or specific NEFAB ExPak range.



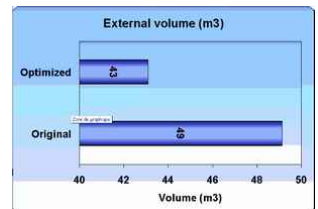
1. Basic parameters and optimising policy parameters are entered before running OptiCo.



2. Results are displayed graphically in a simple and straightforward way.



3. Major savings are compared between actual and simulated data.



4. Major factors compared are: number of references, external volume, and box weight.

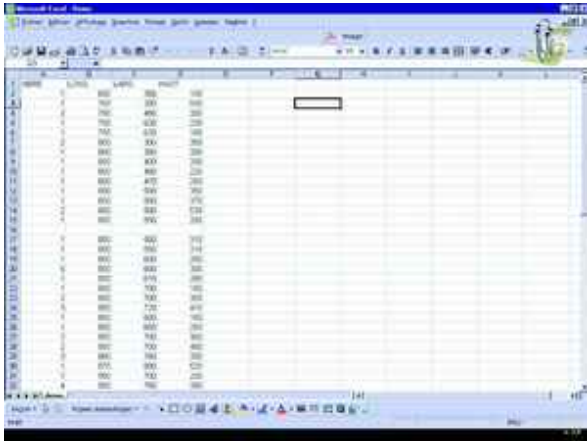
Nefab AB

Östra Storg. 20 • Box 2184
SE-55002 JÖNKÖPING • SWEDEN
Phone +46(0)36 345050 • Fax +46(0)36 150444
info@nefab.se

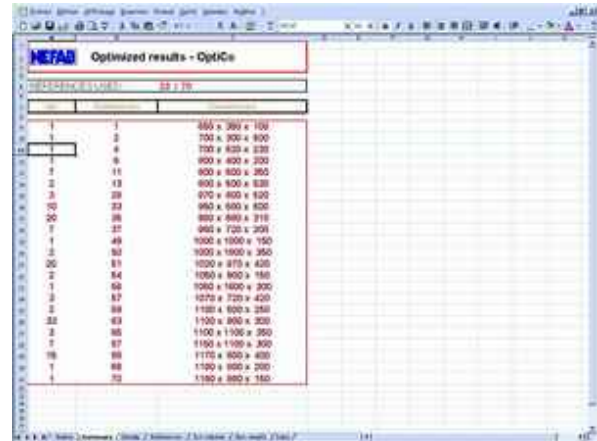
Consulting

Outcome and reports

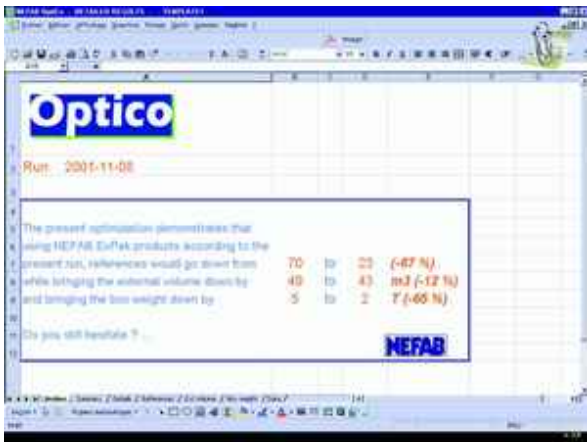
From your own data (Excel spreadsheet) summarising the internal dimensions and number of boxes that you have used within a given period, OptiCo searches for more standardized NEFAB ExPak solutions, with lesser weight, external volume and number of references bottomlines.



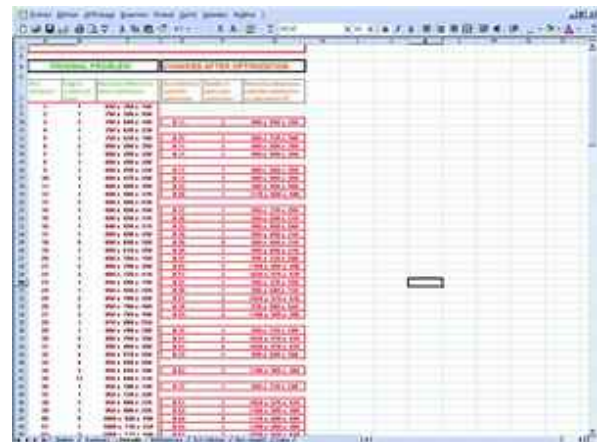
1. OptiCo provides you with an editor for entering or modifying your data in a very simple way. (can also use your own .xls files).



3. A list of all box numbers and dimensions used can also be displayed.



2. For each tentative solution that you reach with the OptiCo navigator, a very synthetic summary can be displayed.



4. Finally, you are provided with the actual changes that the optimizer calculated from your original data in order to bring costs down.

OptiCo will help you with your packaging policies: you will find leads to costs reductions, by using as much standard box references as possible.

You will find out that this simplification will surprisingly lead to important savings on transports costs from significant gains on external volumes and weights.